

In some cases the channelized and straightened river form may have arisen due to a combination of natural and anthropogenic reasons. On the ELC in the Plains zone, approximately 3100 feet of the river became straightened when it avulsed into a large ditch on the floodplain in the 1990s (Figure 4.11).

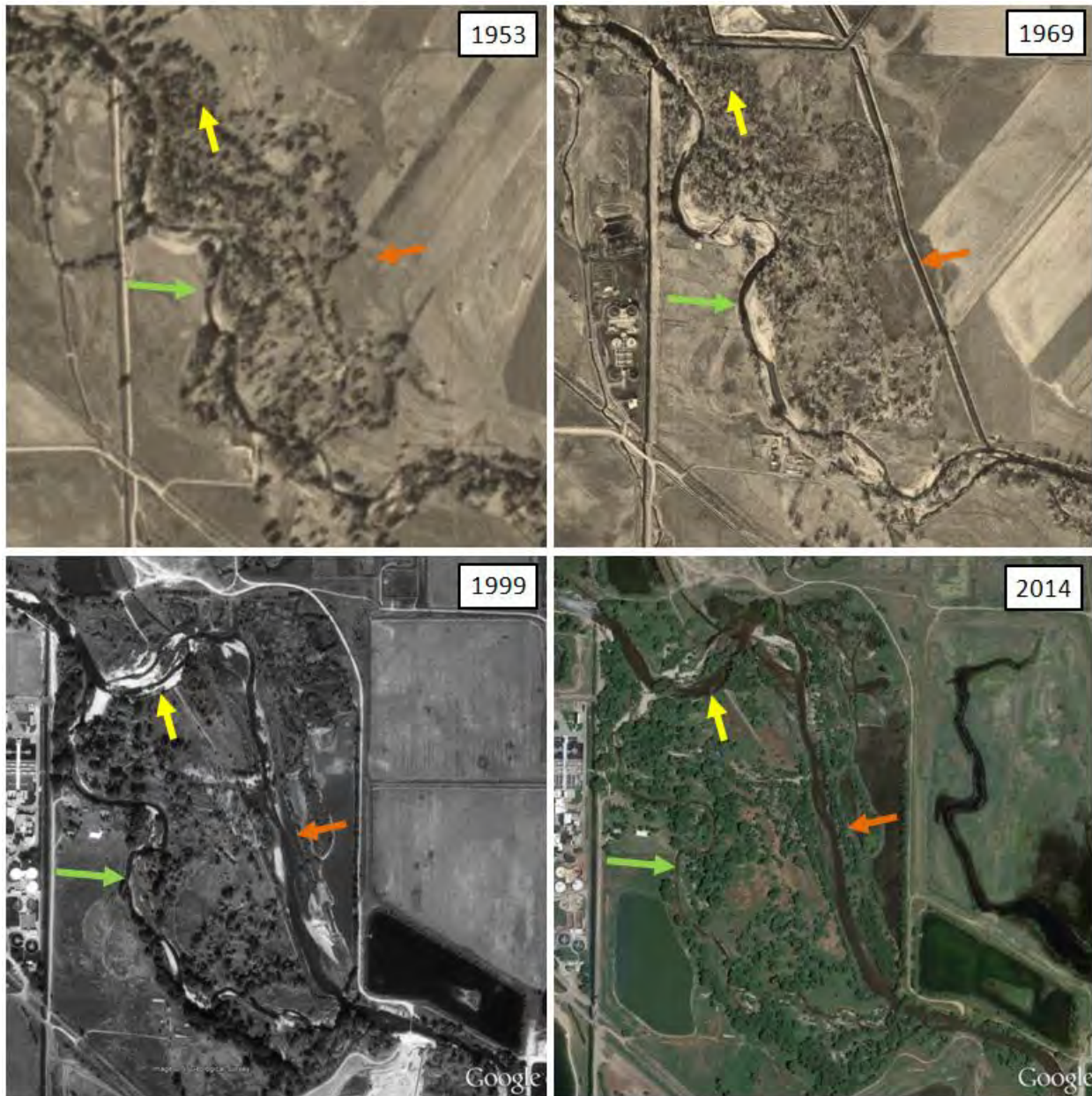


Figure 4.11: The straight single-channel planform of 3100 feet of the Poudre River on the Environmental Learning Center was formed in the 1990s when the river cut into and started flowing through a large floodplain ditch, abandoning its historic sinuous alignment. The time sequence of aerial photos shows the historic channel alignment (green arrow), avulsion point (yellow area), and current alignment through the ditch (orange arrow).